



## 1PC UNI-BODY CLASS 150 FLANGED BALL VALVE

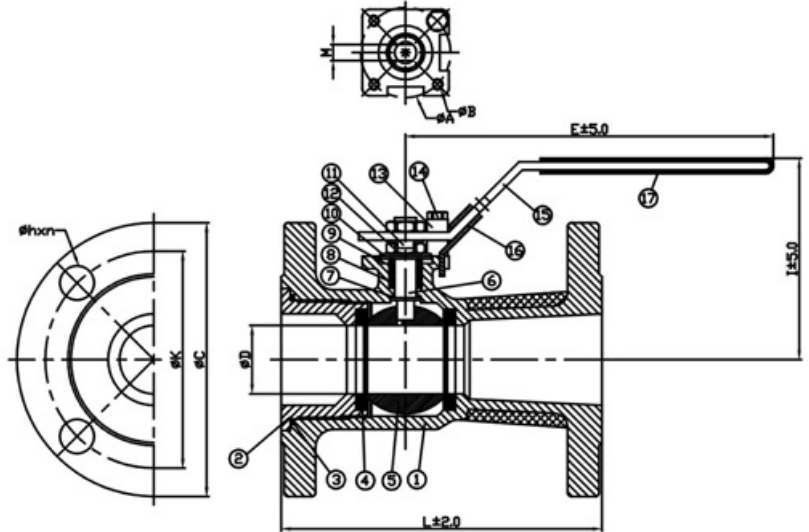
### JV-9100

<b>Feature</b>	Uni-Body Type ISO-5211 Top Flange
<b>Port Bore</b>	Reduce Bore
<b>Design</b>	ASME B16.34
<b>Material</b>	S/S; EN10213-4:1.4408; ASTM A351-CF8M C/S; EN10213-2:1.0619; ASTM A216-WCB
<b>Flange</b>	ANSI-B16.5 Class 150
<b>Testing</b>	According to API-598
<b>Certificate</b>	EN10204-3.1
<b>Temp.</b>	-20 °C to 200 °C (-4 °F to 392 °F)
<b>Seat/Seal</b>	PTFE
<b>Stem</b>	AISI 316 Blow-out Proof with Anti-Static Device
<b>Options</b>	Padlocking Device Gear Operator or Pneumatic Actuator Graphite Seat/Gasket for API-607 5 <sup>th</sup> Edition Firesafe Approved available.



### MATERIAL LIST

NO	PART	MATERIAL	
1	Body	CF8M = 1.4408	WCB = 1.0619
2	Cap	CF8M = 1.4408	WCB = 1.0619
3	Body Seal	PTFE	
4	Seat	PTFE	
5	Ball (Relief Hole)	CF8M = 1.4408	
6	Stem (Anti-Static)	AISI 316 = 1.4401	
7	Thrust Washer	PTFE	
8	Stem Packing	PTFE	
9	Gland Ring	AISI 304 = 1.4301	
10	Belleville Disc	AISI 301 = 1.4310	
11	Nut Stopper	AISI 304 = 1.4301	
12	Stem Nuts	A2 = A194-8 = SUS 304	
13	Stop Pin	AISI 304 = 1.4301	
14	Hex Cap Screws	A4 = A193-B8 = SUS 304	
15	Handle	AISI 304 = 1.4301	
16	Locking Device	AISI 304 = 1.4301	
17	Handle Sleeve	PVC	



### DIMENSIONS (mm)

SIZE	ISO-5211		D	L	C	E	I	K	M	h	n	WT (KG)	
	A	B											
1/2"	F03	36	M5	10	108	89	118	65	60.3	5	15.9	4	1.37
3/4"	F04	42	M5	15	117	98	135	80	69.8	5	15.9	4	1.76
1"	F04	42	M5	20	127	108	135	87	79.4	7	15.9	4	2.48
1-1/2"	F05	50	M6	32	165	127	168	102	98.4	7	15.9	4	4.58
2"	F05	50	M6	38	178	152	205	115	120.6	9	19	4	6.98
2-1/2"	F07	70	M8	49	190	178	215	120	139.7	9	19	4	11.20
3"	F07	70	M8	65	203	190	280	178	152.4	12	19	4	15.22
4"	F07	70	M8	80	229	229	375	188	190.5	16	19	8	21.76